



Floor spring **DORMA BTS 75 V**

Suitable for all applications – with adjustable closing force

- non-handed unit suitable for single and double action swing doors
- with mechanical backcheck
- conforms with the highest corrosion resistance class to EN 1154



DORMA BTS 75 V

... the adjustable floor spring – universal in application with a unique combination of functions

Whether it be standard, narrow or wide, LH or RH single action, or a double action door – the new DORMA BTS 75 V is the answer, offering the ideal spring size by simple in-situ adjustment of a screw. Designed and built for rugged durability, the DORMA BTS 75 V is suitable for all doors up to a weight of 120 kg and widths up to 1100 mm, while its

range of functions ensures maximum user convenience, comfort and safety.



Quality assured manufacture to DIN ISO 9001, EN 29001, BS 5750. Certified and verified by BSI Quality Assurance Reg. No. Q 6423, FM 10756

Plus points ...

... for the trade

- Reduced storage space requirement and lower inventories thanks to separate, interchangeable spindle inserts.
- Reduced handling weight due to aluminium body.

... for the installer

- Non-handed unit universally suitable for both single and double action doors.
- Easy adaptability to individual requirements thanks to adjustable closing force and two independently adjustable closing speed valves.
- In-situ adjustment in the cement box.

... for the architect/specifier

- Concealed installation for elegant invisibility.
- All main functions incorporated.
- Rugged construction for doors up to 120 kg.
- Closing action effective from 175°.

... for the user

- Consistent closing cycle virtually unaffected by changes in temperature.
- Easy door operation thanks to high mechanical efficiency
- Optional integrated fixed-position hold open.
- High corrosion resistance thanks to aluminium body.

Data and features

BTS 75 V

Closing force variable (Closing moment approx. 10 – 30 Nm)		EN 1 – 4 ¹⁾
General doors ²⁾	≤ 1100 mm ¹⁾	●
External doors ²⁾	≤ 1000 mm	●
Non-handed unit suitable for both single action and double action doors		●
Closing force variable by adjusting screw		●
Closing speeds variable by two independent valves	175° – 15° 15° – 0°	●
Mechanical backcheck		●
Fixed-position hold open at a door angle of	90° 105°	○
Cover plate fixing	on cement box on spring body	– ●
Weight in kg, approx.		3.0
Dimensions of cement box in mm	Length Width Height	285 82 50
Door closers tested to EN 1154		●

● yes – no ○ option

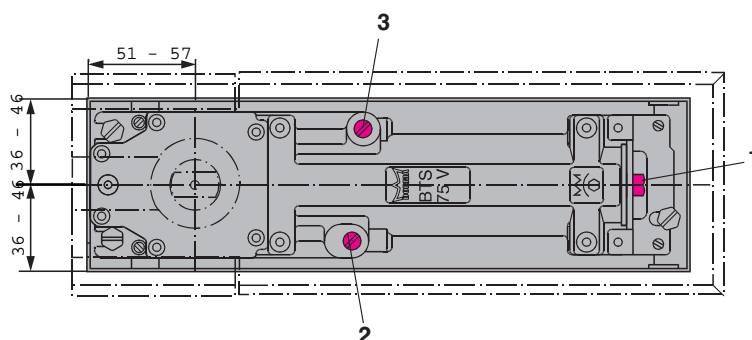
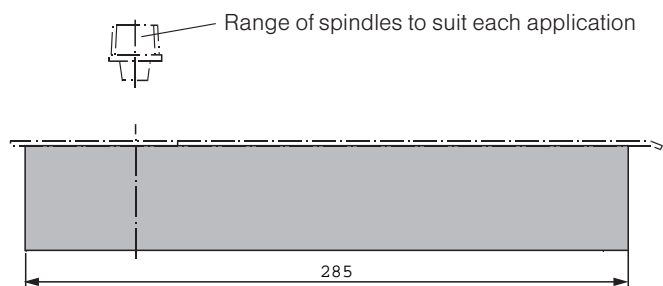
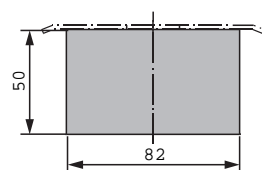
¹⁾ Spring size data and max. door width to EN 1154 "Controlled Door Closing Devices".

²⁾ For especially high and heavy doors, and also doors which constantly have to close against high wind pressure, we recommend the DORMA BTS 80.



The DORMA BTS 75 V is CERTIFIRE approved (Certificate No. 127) for door types ITT 120.

- 1 Adjusting screw for setting the spring size.
- 2 Valve for closing speed adjustment 175° – 15°.
- 3 Valve for closing speed adjustment 15° – 0°.



Standard and optional functions

Closing speed

The DORMA BTS 75 V is equipped with two regulating valves for adjusting the closing speed and can thus be ideally adapted to the structural conditions of each application. The closing speeds for the sweep ranges 175° – 15° and 15° – 0° are individually adjustable.

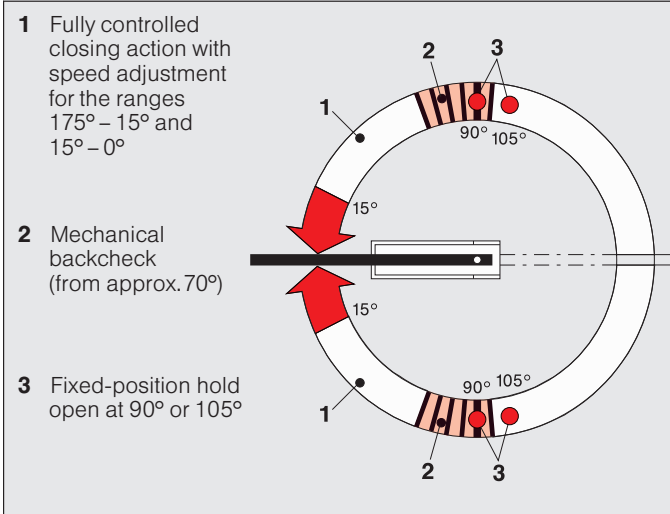
Backcheck

The integrated mechanical backcheck provides a cushioning effect towards the end of the opening range so as to minimise damage to the door and wall in the event of excessive opening force being applied (e.g. gust of wind).

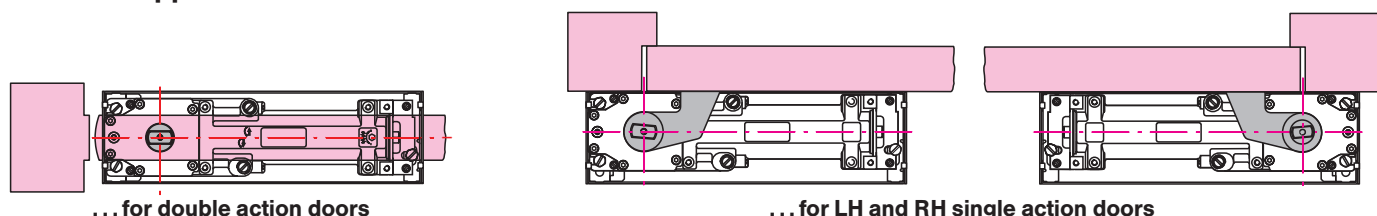
Fixed-position hold open (option)

The fixed-position hold open device enables the door to be held at an angle of either 90° or 105° depending on the version selected.

Not suitable for use on Fire Doors.

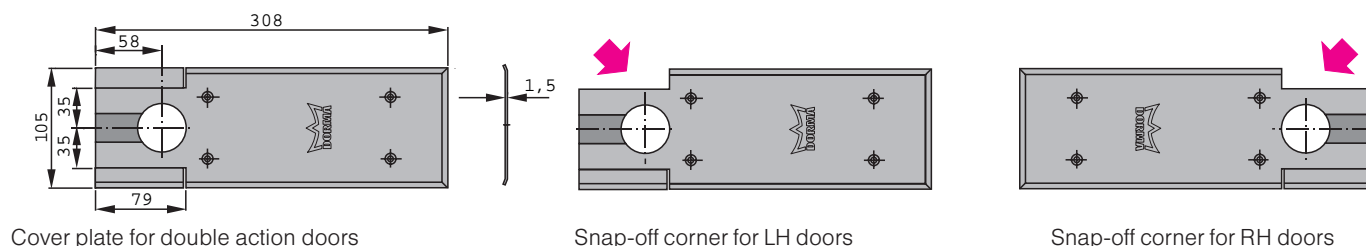


Universal application ...



For further information relating to different applications, installation, door straps and top centres, see brochure entitled "Accessories for floor springs"

Accessories



Universal cover plate

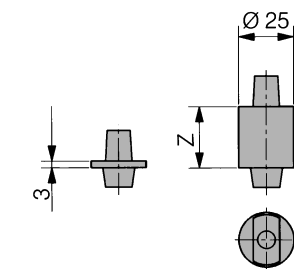
Adaptable for right or left hand single action applications by simply snapping off the appropriately pre-blanked corner sections. For centre pivoted (i.e. double action) doors, the corner sections remain in place.

The universal cover plate is available in stainless steel or satin brass (material thickness 1.5 mm).

Spindles

A range of interchangeable spindles is available to provide floor clearance in a variety of situations (doors with thresholds, carpeted floors, etc).

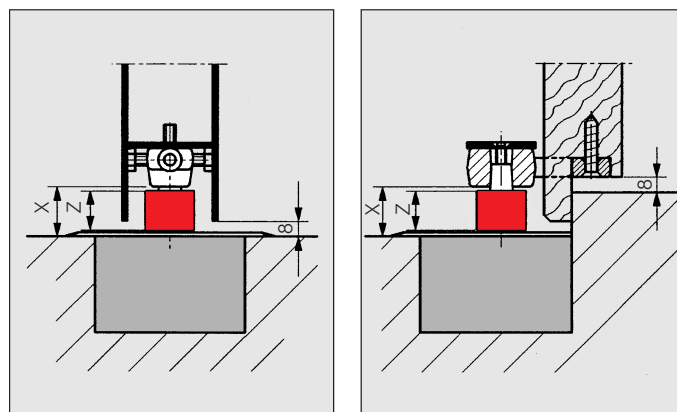
Special spindles available on application: e.g. with 3° offset or square section insert, as are spindles for non DORMA-specific accessories.



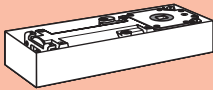
Spindle Extension = Dimension "X" – (8 mm)
(Door Clearance) Z – 3 mm

Sealing compound

For filling cavities between the closer body and the cement box to protect against moisture penetration (specified by German VOB regulations, inter alia, for wet rooms).

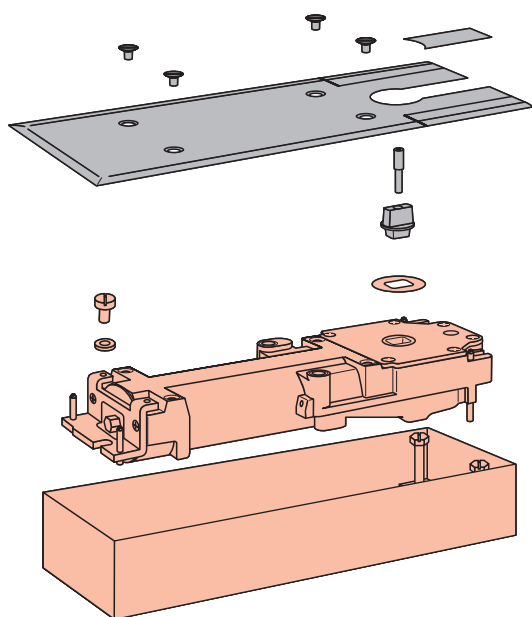


Equipment and accessories

BTS 75 V for closer including cement box, without spindle	Interchangeable spindles – flat tapered type *														Cover plate		Sealing compound 2300
	0 (standard)	Extension (in mm)													Stainless steel	Satin brass	0.5 kg
		5	7.5	10	12.5	15	20	25	28	30	35	40	45	50			
	45200401	45200402	45200403	45200404	45200419	45200405	45200406	45200407	45200414	45200408	45200409	45200410	45200411	45200412	46700059	46700159	45090059
Size EN 1 – 4	#	#	#	#	#	#	#	#	#	#	#	#	#	#	#	#	#
61701001	#	#	#	#	#	#	#	#	#	#	#	#	#	#	#	#	#
Size EN 1 – 4 with 90° hold open	#	#	#	#	#	#	#	#	#	#	#	#	#	#	#	#	#
61701201	#	#	#	#	#	#	#	#	#	#	#	#	#	#	#	#	#
Size EN 1 – 4 with 105° hold open	#	#	#	#	#	#	#	#	#	#	#	#	#	#	#	#	#
61701301	#	#	#	#	#	#	#	#	#	#	#	#	#	#	#	#	#

= Accessory

* Special models on application:
e.g. with 3° offset or square section insert;
spindles for non DORMA-specific accessories



Specification text

Universal floor spring with adjustable closing force, tested and approved to EN 1154, size 1 – 4, corrosion class 4, non-handed unit suitable for LH, RH and double action doors, with closing action operational from approx. 175°. With hydraulically fully controlled closing cycle, adjustable closing speed with two independent valves, and mechanical backcheck. Cover plate secured to floor spring body.

Special models

- ☐ 90° hold open
- ☐ 105° hold open

Accessories

- ☐ Spindle
 - ☐ standard
 - ☐ ... mm extension
 - ☐ special design ...
- ☐ Universal cover plate 1.5 mm thick
 - ☐ stainless steel
 - ☐ satin brass
- ☐ Sealing compound

Make: DORMA BTS 75 V

Subject to change without notice

DORMA Door Controls Pte. Ltd.
No. 2, Jalan Terusan
Jurong
Singapore 619285
Rep. of Singapore
Tel. 268 7633
Fax 265 7914
Telex 26822 dorma rs

DORMA GmbH + Co. KG
Postfach 40 09
D-58247 Ennepetal
Breckerfelder Straße 42 – 48
D-58256 Ennepetal
Telefon (0 23 33) 7 93-0
Fax (0 23 33) 79 34 95
Telex 8 23 375